



**Student Government Resolution 115.007**

**A Resolution to Include the Environmental Sustainability Fee in the Student Government 2015 Spring Elections and Implementation Information if Passed at Truman State University**

**Sponsored by Environmental Affairs Chair Adrian Wheeler, Vice President Molly Turner, Senator Chris Hornsey, and Senator Wyatt Mansell**

WHEREAS,

- The Student Government is the official governing body of the Student Association and exists to represent the present and long term best interests of the Student Association in the formulation of the University policy and in the fulfillment of the University mission; and
- Truman State University's Sustainability Pledge states that Truman is committed to a reduction in waste, more responsible interactions with fellow citizens, and stewardship practices that keep future generations in mind<sup>i</sup>; and
- Truman is a member of the Missouri Student Environmental Coalition (MSEC)<sup>ii</sup>; and
- Truman is a member of the Association for the Advancement of Sustainability in Higher Education (AASHE)<sup>iii</sup>; and
- In Spring 2014, a Sustainability Learning Community was established in Truman's Blanton Nason Brewer residence hall along with a Residence Life Sustainability Educators Program<sup>iv</sup>; and
- Truman State University's curriculum offers nine Sustainability-Focused and forty-five Sustainability-Related Courses, representing a total of fifty-four courses across fourteen departments, along with a minor in Environmental Studies and an online Sustainability Certificate<sup>v</sup>; and
- Truman State President's Sustainability Action Committee set a goal of achieving the STARS Silver rating by this year (2015)<sup>vi</sup>; and
- To help reduce waste and purchasing fees by five percent during the years of 2014 and 2015, the President's Sustainability Action Committee signed up for the EPA Food Recovery Challenge<sup>vii</sup>; and
- Truman is working to reduce waste and towards a more renewable energy friendly campus with five Solar Arrays as of 2014, while Bulldog Biodiesel purchased a BioPro190 automated processor which has been fueling all equipment at the University Farm since 2008<sup>viii</sup>; and
- To manage energy usage and conservation, all buildings on Truman State University's campus have solar, water and electric data in a Utility Dashboard program<sup>ix</sup>; and



- In 2014, Student Government brought Glass Recycling to Truman's campus which was followed by a grant request from the City of Kirksville to assist the creation of a Kirksville Glass Recycling Program in which it was awarded on February 18, 2015; and
- The President's Sustainability Action Committee stated in their annual report from 2014 that one of their eight points of focus for the 2014/2015 academic year was to: "work with student organizations on a sustainability fee"<sup>x</sup>; and
- Truman State University's tuition or current fees does not currently include an Environmental Sustainability Fee; and
- The Student Government's Environmental Affairs Committee budget is not significant enough to fund large-scale projects for the advancement of the sustainability efforts throughout campus; and
- Truman State University students have continuously expressed their campus environmental concerns throughout various means of communication<sup>xi</sup>; and
- The results of a survey conducted by the Student Government in the spring of 2015 suggests that 32.67 percent of Truman student survey participants said they feel neutrally satisfied with the current environmental efforts on Truman's campus<sup>xii</sup>; and
- The 2015 Truman Student Government survey stated that out of those who were engaged, 53.83 percent said they would be willing to pay a fee each semester to help fund projects that would make Truman State University a more environmentally-friendly and sustainable campus<sup>xiii</sup>; and
- Out of those who took part in the 2015 survey, 74.14 percent Truman students who responded to the question "What is the most amount you would be comfortable paying for the Environmental Sustainability Fee each semester?" 151 students (33.63 percent) said they would be comfortable paying a fee of ten dollars, 150 students (33.41 percent) stated five dollars, 114 students (25.39 percent) agreed twenty dollars, and only thirty-four students (7.57 percent) with an amount equal to or beneath two dollars<sup>xiv</sup>; and
- The implementation of an Environmental Sustainability Fee on Truman State University's campus would make Truman the third university in the state of Missouri to have an Environmental Sustainability Fee, making Truman a leader within the state in environmental proactivity;<sup>xv</sup> and
- According to AASHE, by passing the Environmental Sustainability Fee, Truman State University would be approximately the fifty-fifth Higher Education Center in the nation to pursue a student approved environmental fee<sup>xvi</sup>, joining the growing participation of reducing, reusing and recycling our Earth and other man-made materials; and
- Aside from formal research, the Student Government and the Environmental Affairs Committee has collected informal polling at events such as the Activities Fair and Bulldog Business Day in the fall of



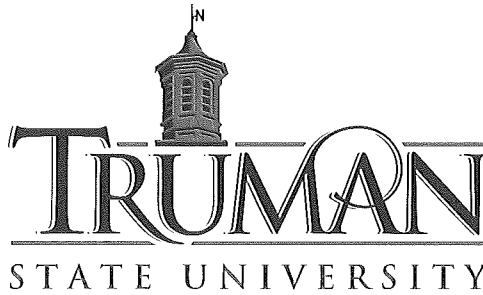
2014, which have shown that generally, the voice of the Student Association at large is environmentally engaged.

THEREFORE BE IT RESOLVED THAT THE STUDENT GOVERNMENT,

- Commends the Student Association for their distinct, environmental voice to encourage a campus Environmental Sustainability Fee; and
- Will put a five dollar Environmental Sustainability Fee per semester up for a vote on the Student Government spring 2015 elections the third week of April this year for the Student Association to ultimately approve or deny; and
- If the Environmental Sustainability Fee passes during the Student Government 2015 spring election, the Environmental Sustainability Fee will charge all undergraduate and graduate students five dollars a semester; and
- The Student Government will work to develop operating procedures for the Environmental Sustainability Fee Accountability Committee, which will need to be approved or denied by the Student Government before any money from the fee shall be spent; and
- Encourages future efforts by students, faculty, staff, and administrators to continue pursuing a better environment and being proactive leaders, aiding a global sustainability transformation.

THE STUDENT GOVERNMENT DIRECTS THAT,

Additional copies of this resolution are disseminated to the University President, Troy Paino; Provost/Vice President of Student Affairs, Susan Thomas; Dean of Student Affairs, Lou Ann Gilchrist; Chief Information Officer, Donna Liss; Vice President for Administration, Finance, and Planning at Truman David Rector; University Board of Governors; Physical Plant; the President's Office; Faculty Senate; Graduate Council; Undergraduate Council; the President's Sustainability Action Committee; the Public Relations Office; the Strategic Planning Advisory Committee (SPAC); the Strategic Planning Steering Committee (SPSC); the Departments that provide Sustainability-Related Courses; and the Truman Media Network.



Appendix

Figure A:

I am satisfied with Truman State University's current environmental efforts on campus.  
(606 Responses)

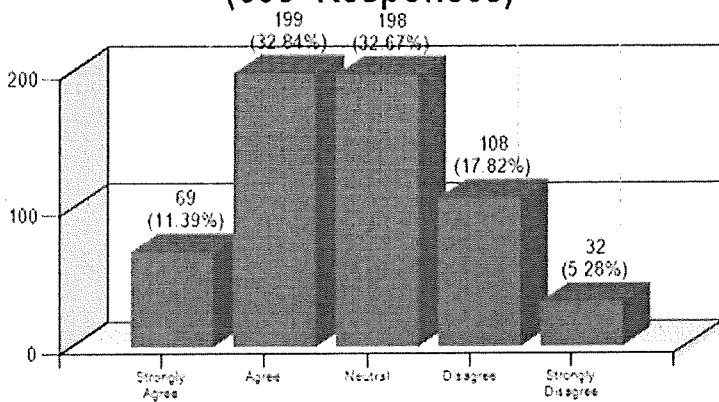
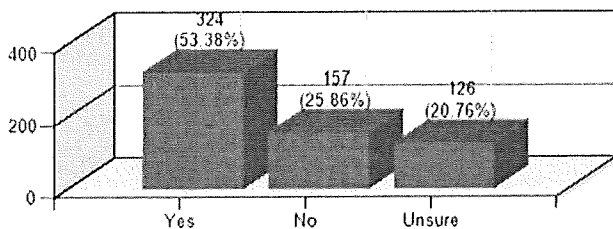


Figure B:

Would you be willing to pay a fee each semester to help fund projects that would make Truman State University a more environmentally friendly and sustainable campus?  
(607 Responses)



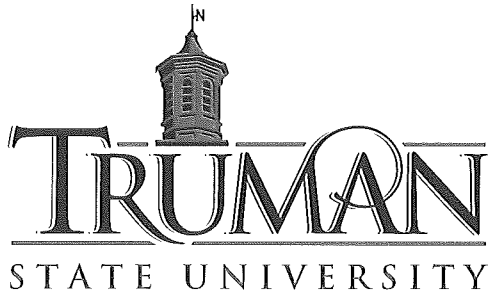
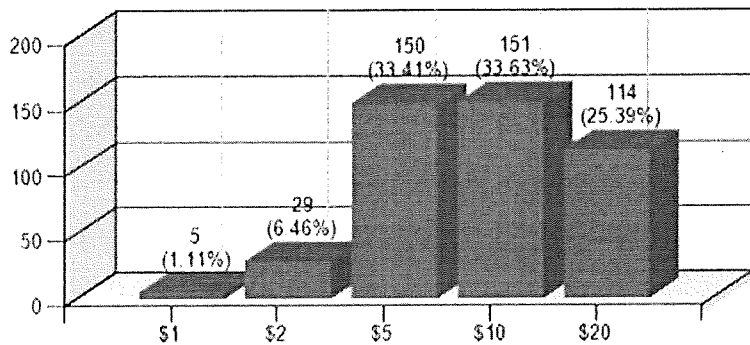


Figure C:

Please, note that this question was only available to students who chose “yes” or “unsure” from Figure B.

**What is the most amount you would be comfortable paying for the Environmental Sustainability Fee each semester?  
(449 Responses)**



<sup>i</sup> For more information about the Sustainability Pledge at Truman State University, visit the Truman Sustainability, “Education and Research” section of the University’s website. Only Truman faculty, staff, administration and students can take the Sustainability Pledge by using their TruView login information. As of the May 9, 2013 eight hundred sixty people have taken the Sustainability Pledge. To visit the webpage directly, please, see <http://sustainability.truman.edu/education-and-research/>.

<sup>ii</sup> The Missouri Student Environmental Coalition (MSEC) “is a network of Missouri students and organizations dedicated to improving the environmental impact of the state through action, advocacy, and education.” The mission of MSEC, as quoted from their website is: “Unify the youth environmental

movement of Missouri to turn ideas into action and support students to achieve an ecologically sound, socially just, and economically viable state for the benefit of all life, present and future." For more information, please see the MSEC website at:

<https://sites.google.com/site/moststudentenvironmentcoalition/>. More information on MSEC's relationship

with Truman State University's Inter-Campus Collaboration on Sustainability can be found at:

<http://sustainability.truman.edu/public-engagement/>.

<sup>iii</sup> Truman is a member of the Association for the Advancement of Sustainability in Higher Education (AASHE). "AASHE is helping to create a brighter future of opportunity for all by advancing sustainability in higher education. By creating a diverse community engaged in sharing ideas and promising practices, AASHE provides administrators, faculty, staff and students, as well as the business that serve them, with: thought leadership and essential knowledge resources; outstanding opportunities for professional development; and a unique framework for demonstrating the value and competitive edge created by sustainability initiatives." (aashe.org) On the AASHE website, you can find their mission, values, and goals at <http://www.aashe.org/about/aashe-mission-vision-goals>. More information on AASHE's relationship with Truman State University's Inter-Campus Collaboration on Sustainability can be found at <http://sustainability.truman.edu/public-engagement/>. The President's Sustainability Action Committee (PSAC) also mentions AASHE within their 2013-2014 annual report (page six). The report can be found at

<http://admissions.truman.edu/web/FlexPaperZine/view.asp?file=SustainabilityAnnualReport2013-2014.pdf>.

<sup>iv</sup> Although currently the Truman State University website is not updated, Truman State University now offers a Sustainability Learning Community. For more information, see the PSAC annual report mentioned in endnote ii. For more information on Learning Communities at Truman State, see <http://www.truman.edu/residence-life/community-connections/living-learning-communities/>.

<sup>v</sup> Ibidem, page six. Also, see a complete list of Departments and classes as mentioned at <http://sustainability.truman.edu/sustainability-related-courses/>.

<sup>vi</sup> Ibidem first link, pages five and six. For information on the AASHE rating scale, see <https://stars.aashe.org/>. For information specific to Truman State University and rating, see <https://stars.aashe.org/institutions/truman-state-university-mo/report/2012-03-14/OP/grounds/OP-T2-21/>.

<sup>vii</sup> See PSAC 2013-2014 annual report (page four) at <http://admissions.truman.edu/web/FlexPaperZine/view.asp?file=SustainabilityAnnualReport2013-2014.pdf>. Information on the EPA Food Recovery challenge can be found at <http://www.epa.gov/foodrecoverychallenge/>.

<sup>viii</sup> Ibidem, pages four through six. Solar Panels: “Solar Panels Added to Campus Buildings” on Truman’s website at <http://newsletter.truman.edu/article.asp?id=8781>. “Truman Installs Solar Panels” was the title that made the front page of Truman’s newsletter. Donna Liss and Karl Schneider, two key members in Truman’s sustainability efforts are also interviewed for the article which can be located at <http://index.truman.edu/pdf/2013-2014/august29/page1.pdf>. BioPro190: “BioPro Success Stories - Testimonials from BioPro Owners” <http://www.springboardbiodiesel.com/BioPro-Success-Stories>. “Bulldog Biodiesel: Help Create A More Sustainable Campus.” <http://bulldogbiodiesel.truman.edu/process.html>.

<sup>ix</sup> Ibidem, link one, page three.

<sup>x</sup> Ibidem, page six.

<sup>xi</sup> See Editorials section for “Protect Our Streams” from the Truman’s newsletter, the Index at <http://index.truman.edu/pdf/2013-2014/september26/page4.pdf>.

<sup>xii</sup> See Figure A within Appendix.

<sup>xiii</sup> Ibidem, B.

<sup>xiv</sup> Ibidem, C.

<sup>xv</sup> Truman State would be the third University in Missouri behind the University of Missouri with a fee of \$1.10 a semester and an undergraduate enrollment of approximately 27,000 students, and Missouri State University with a fee of \$2.00 a semester with an undergraduate enrollment of approximately 23,000 students. The public universities that were included in this study due to their location in Missouri were: Harris Stowe State, Lincoln, MO Southern State, MO Western State, and Northwest MO State. The private universities that were included in this study due to their location in Missouri were: Avila, Central Methodist, Drury, Evangel, Fontbonne, Hannibal LaGrange, Lindenwood, Maryville, MO Baptist, Park, Southwest Baptist, Webster and William Woods. For more information, please, see the website of each individual school.

<sup>xvi</sup> The word “approximately” is used in this bullet point because the specific list taken from AASHE (see endnote iii) with a copyright form 2005-2012. The conductors of this research found an Environmental Sustainability Fee at the University of Kansas. This fee was priced at \$0.75 a semester and an undergraduate enrollment of approximately 28,000 students. For the list mentioned within this bullet point, please, see “Dedicated Student Fees for Sustainability” at <http://www.aashe.org/resources/mandatory-student-fees-renewable-energy-and-energy-efficiency>.